



View the Clare Tester & PATGuard 2 Help sheet?

The following document is intended to be a troubleshooting guide to ensure you are downloading data from your tester to the Seaward Software packages in the correct manner. Please check all aspects of this before contacting the technical helpline.

Compatible with HAL Series, STML, SafeCheck 08

Note: PATGuard is only compatible with HAL 101, 102 HAL 101, 102 and 103 HAL 101, 102 and 103 Variants. The HAL104 and 103 HAL104 is incompatible with PATGuard 2

1) Check your Serial (RS232) Cable. This should be the supplied serial cable.

2) Are you using a Serial connection, or is this via a Serial to USB adaptor. (You will need to use both the download cable in conjunction with the USB adaptor. Not all have been tested to work and have differing transfer properties. Please call if 0191 5878708 if you require one.

3) COM ports. Please ensure your com port is the correct one, usually for Serial connection this tends to be COM14. You will now need to configure your tester for the download.

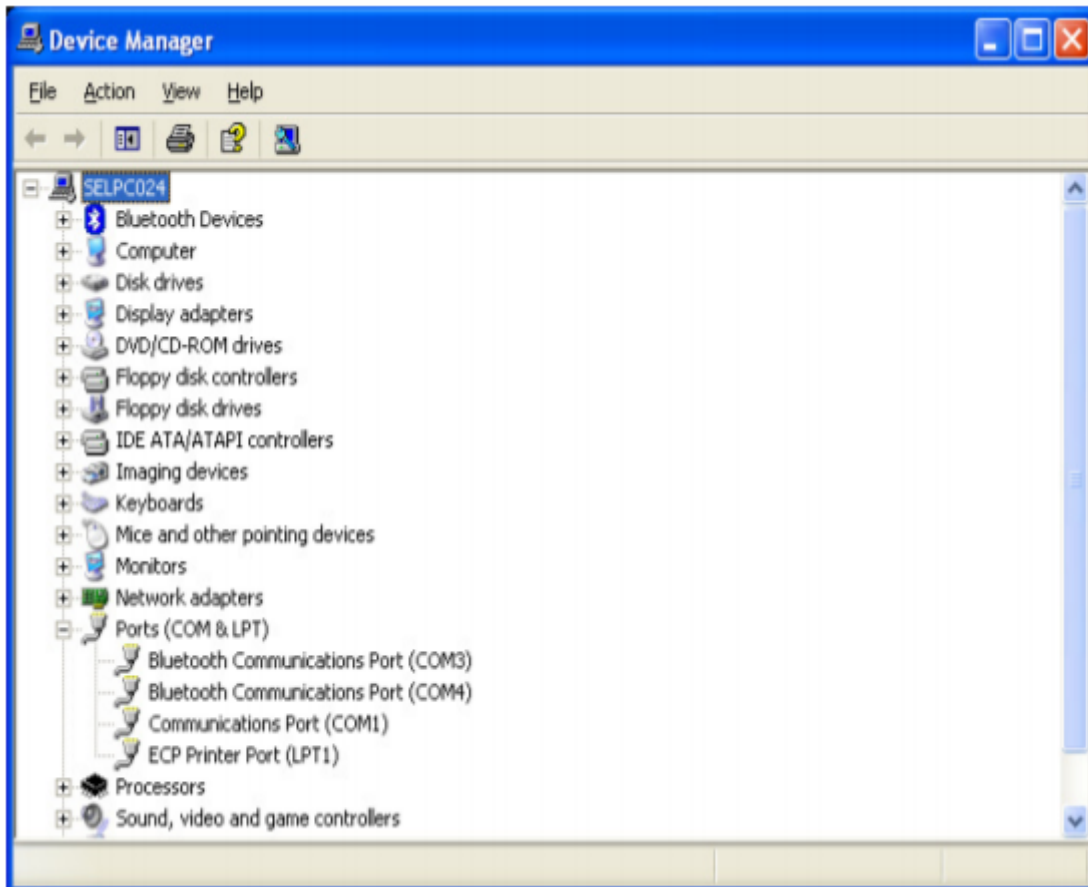
- On the PC click on 'Start'. - Click 'Settings', 'Control Panel'.

- In Control Panel look for 'System' and click on it.

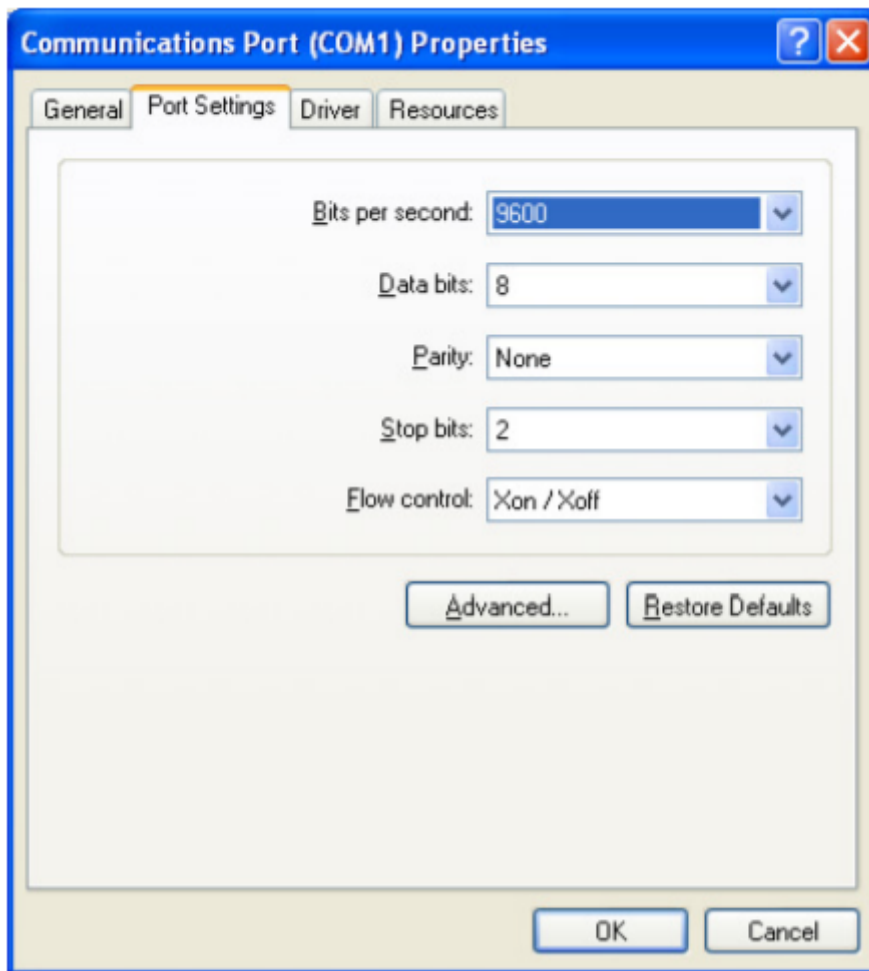
- A pop up will appear look for and click on the tab labelled 'Hardware'.

- With the Hardware section click on 'Device Manager'.

- In Device Manager look for 'Ports (COM & LPT)', click the '+' sign to expand the ports out. From the list double click on the Communications Port you use.



- Another pop up will appear for the COM Port chosen, click the tab at the top 'Port Settings'. Ensure that your port settings match those shown in the picture below.



4) The next step will be to ensure the settings for download on the software are correct.

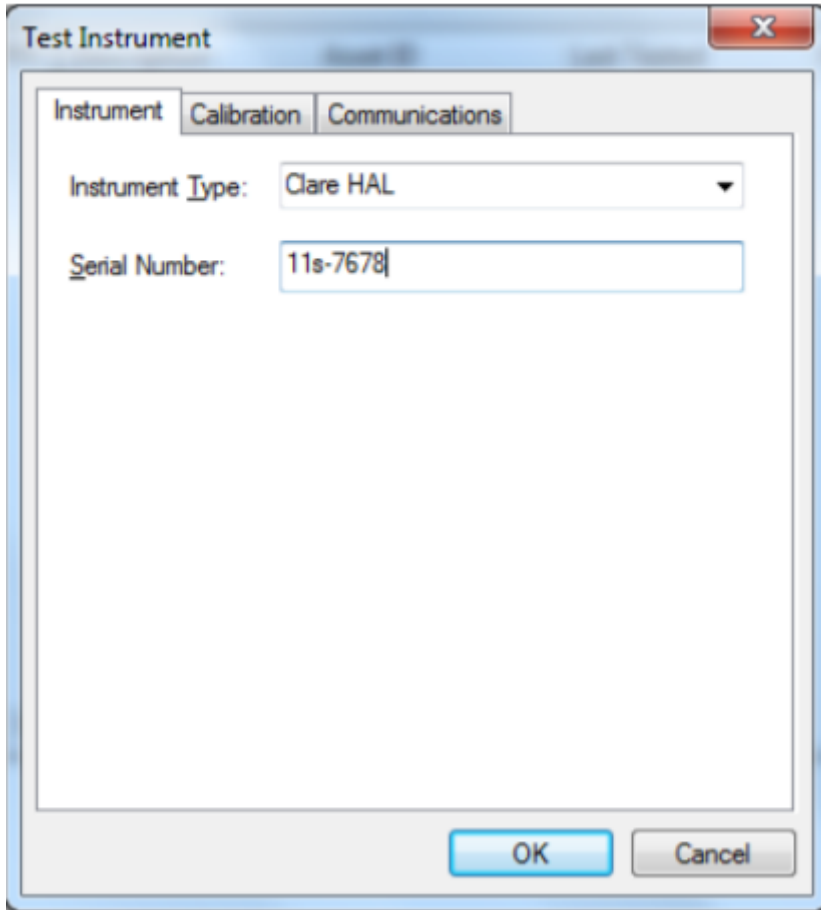
PATGuard Elite and Pro


- Load up your software, and open a new blank database (File □ New...). Name the file anything you prefer.

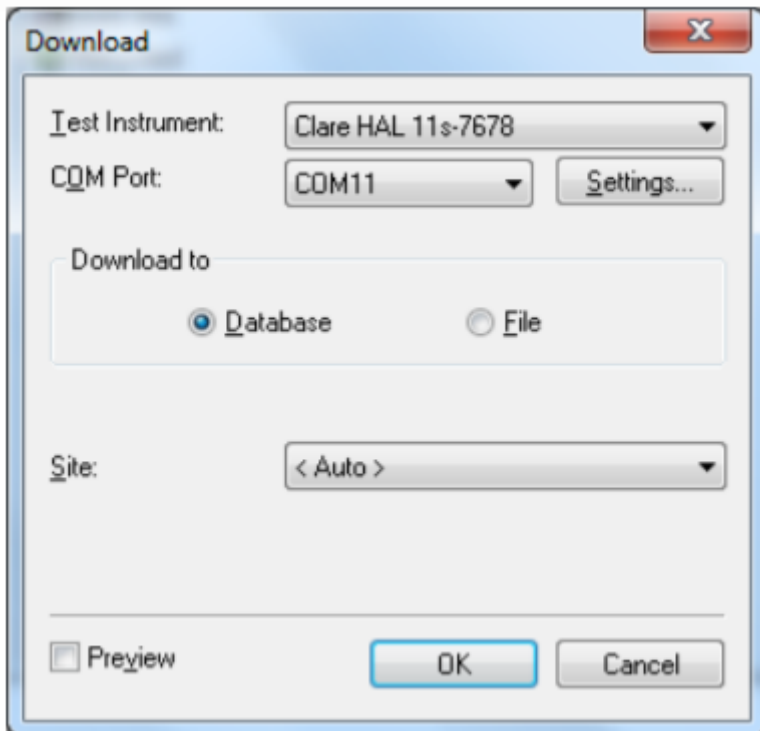
- The next step will be to add the tester you wish to download information from onto the software database, near the bottom left of the software screen you will see 3 Tabs: Personnel, Test Instruments and Reports. Click the test Instruments Tab, then click the following icon when it appears.



- Double Click this Icon and a pop-up will appear; Enter the make and serial number of your tester as shown below. Press OK to save details of your tester, and it will appear in your list of testers.



To begin the download process, press the download button  and the following pop-up will appear. Ensure you select the correct tester and COM Port:

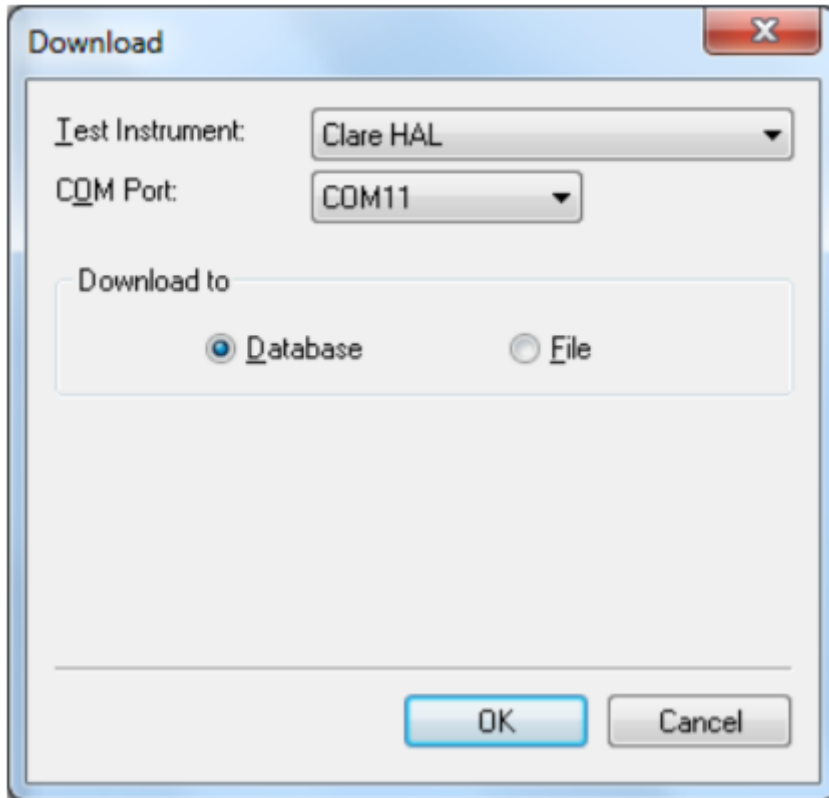


- Press OK at this screen and the next. You will then be further prompted to “Start the

transmission now...”

PatGuard Lite Only

Load your software and at the prompt select the option “Download a Tester”. A pop-up will appear, ensure you place the correct Instrument Type and COM Port. Press OK and you will be prompted to “Enter a New Filename” for the downloaded database. Call this anything you like, and press Save. You will then be further prompted to “Start the transmission Now...”



5) You will now need to configure your tester for the download.

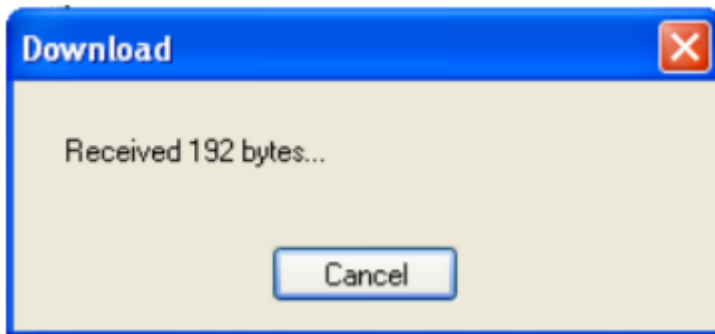
- At the main menu, scroll down to “Download Results”, or “Memory Options” then “Download Results” and press the green button.

- At this point a screen will pop up, ensure your screen is set up as per the Screen shot below. Changes can be made by highlighting the required function, then pressing the Green Button to scroll through.



- Once your tester is set to the correct parameters press OK, you will then be taken to a search function. Set the search parameters as required or to download everything from the tester leave the screen as it first appears. Press the soft key directly below the Start Search option on the screen.

- A process bar will show up on the screen of the tester, and within the software you should see an indication of data being received, as shown below.



- The software will process the data, and then produce your Sites, Location and Assets within the Database.

If you require more help, please contact us at <https://www.seaward.com/login/enquire/>.